

### Patterns of Homelessness

Homeless Clusters in Dublin Emergency Accommodation 2012 - 2016

	Transitional	Episodic	Chronic	Total
Sample Size (n)	9,915	1,252	1,567	12,734
Percentage of Clients	78%	10%	12%	100%
Average No. of Nights	73.02	236.10	638.38	158.62
Minimum No. of Nights	1	4	323	1
Maximum No. of Nights	373	1,146	1,714	1,714
Average No. of Episodes	1.33	5.91	2.08	1.87
Minimum No. of Episodes	1	3	1	1
Maximum No. of Episodes	3	17	7	17
Client Nights (Sum)	723,947	295,599	1,000,349	2,019,895
Percentage of Client Nights	36%	15%	50%	100%
Ratio %nights/ %clients	0.46	1.46	4.13	1.00

Source: DRHE/ UCD (2019)

## Patterns of Homelessness

International Application of Homeless Cluster Methodology

Source	Location	Time (Years)	Final population	Transitional	Episodic	Chronic
Culhane et al, (2007)	New York City	3	10,461	73%	5%	22%
	Massachusetts	2	494	74%	6%	20%
	Philadelphia	3	1,673	72%	8%	20%
	Columbus	2	674	80%	2%	18%
Benjaminsen & Andrade, (2015)	Denmark	11	25,326	77%	7%	16%
	Dublin	5	12,734	78%	10%	12%
Kuhn & Culhane (1998)	New York City	3	73,263	81%	9%	10%
	Philadelphia	2	6,897	79%	12%	10%
Aubry et al, (2013)	Toronto	4	56,533	88%	9%	4%
	Guelph	4	1,016	94%	3%	3%
	Ottawa	4	18,879	88%	11%	2%
Kneebone et al, (2015)	Calgary	5	32,972	86%	12%	2%
Rabinovitch et al, (2016)	Victoria	4	4,332	85%	14%	2%

Source: DRHE/UCD (2019)

7

## 1. Housing First Principles and Approach

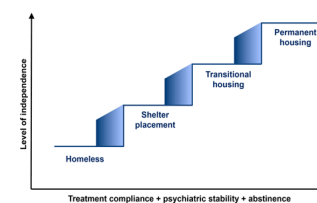
## Housing First – what is it?

**Housing First** provides immediate access to **permanent housing** and support services for people who are experiencing **chronic homelessness** and who have high support needs around **mental health** and **addiction**

9

## Housing First Model

### Traditional Approach



### Housing First Approach




10

## Housing First Principles

1. Immediate access to housing without preconditions
2. Choice and control for service users
3. Separation of housing and treatment
4. Recovery orientation
5. Harm reduction
6. Assertive engagement without coercion
7. Person-centred planning
8. Flexible support for as long as required

11

## Housing First Internationally



Canada  
At Home / Chez Soi

United States  
Pathways to House / USICH

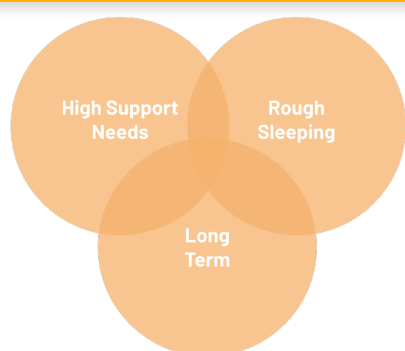
Europe  
Finland  
France  
UK  
Denmark  
Norway  
Sweden  
Netherlands  
Belgium  
Spain  
Portugal  
Ireland

Western Australia

New Zealand

12

## Target Group



High Support Needs


Rough Sleeping

Long Term

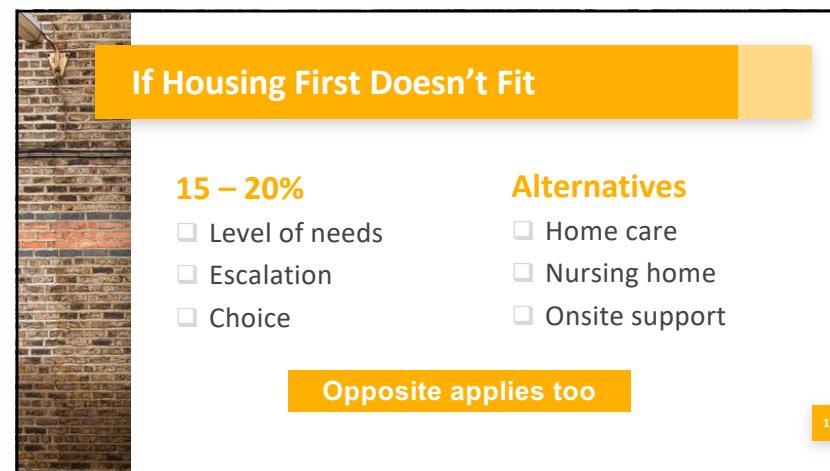
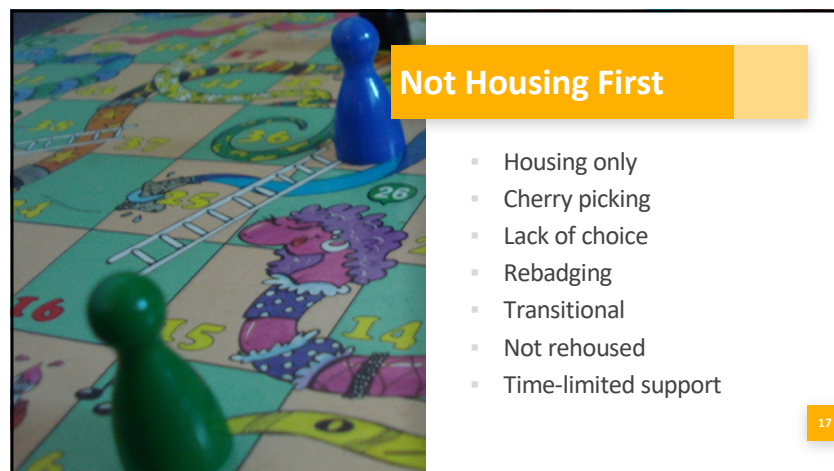
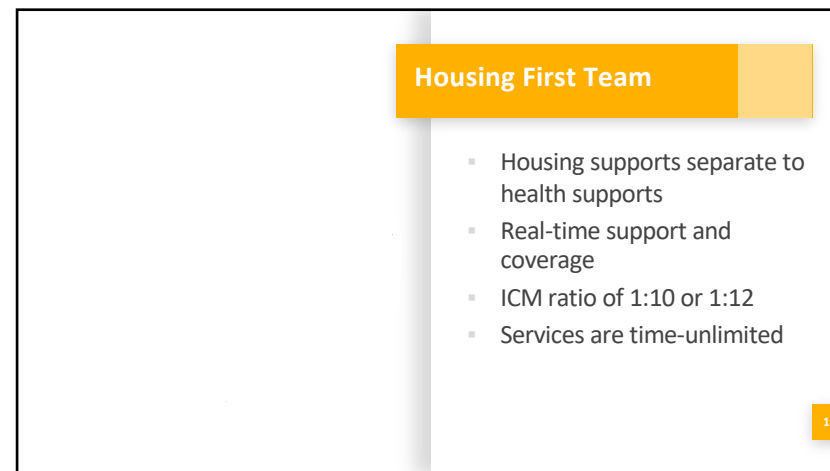
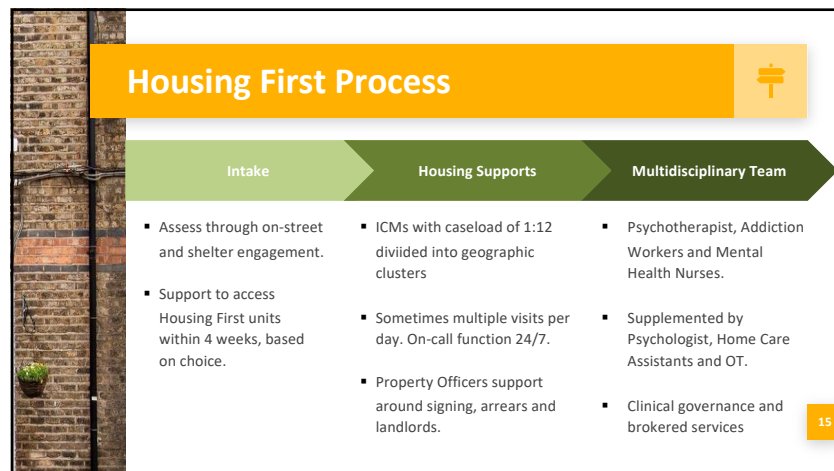
13

## Housing Choice and Structure

- Secure independent tenancy
- Scatter-site
- Based on housing choice
- Speed of access (4 weeks)
- Rehoused if tenancy breaks down
- No interruption in support



14







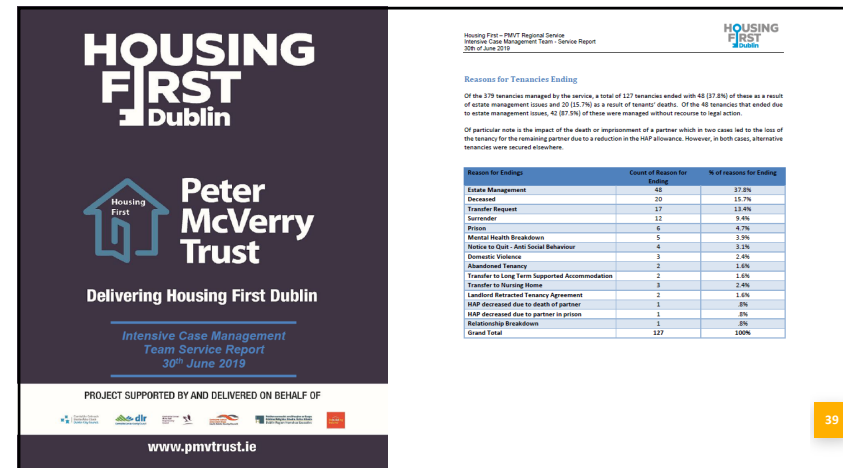
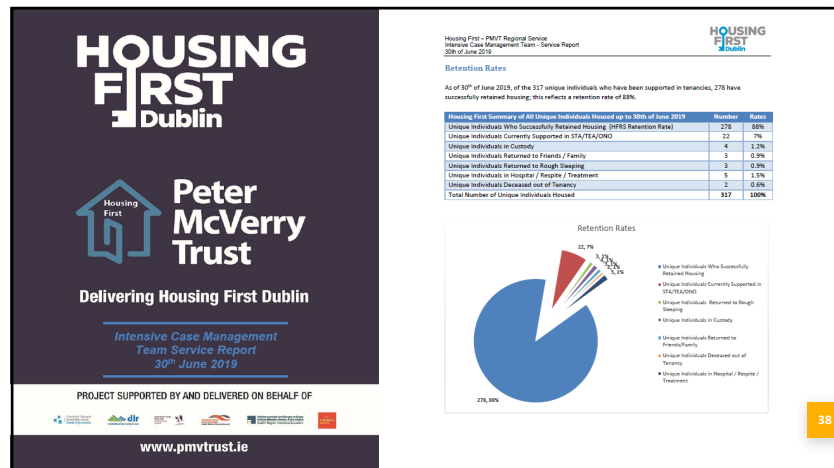
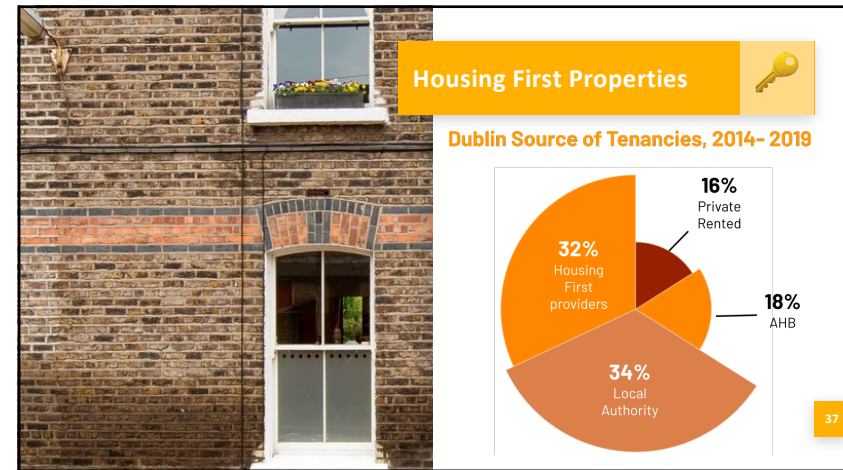
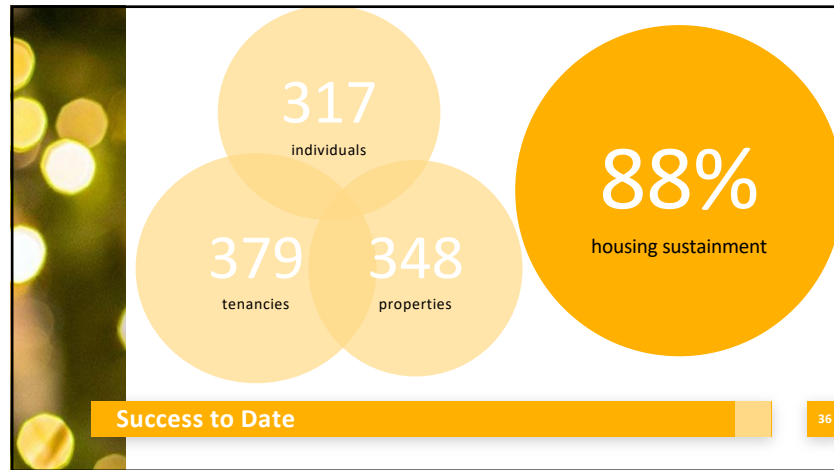
### Dublin Housing First Service

- Dublin Region Homeless Executive pioneered service
- Key milestones

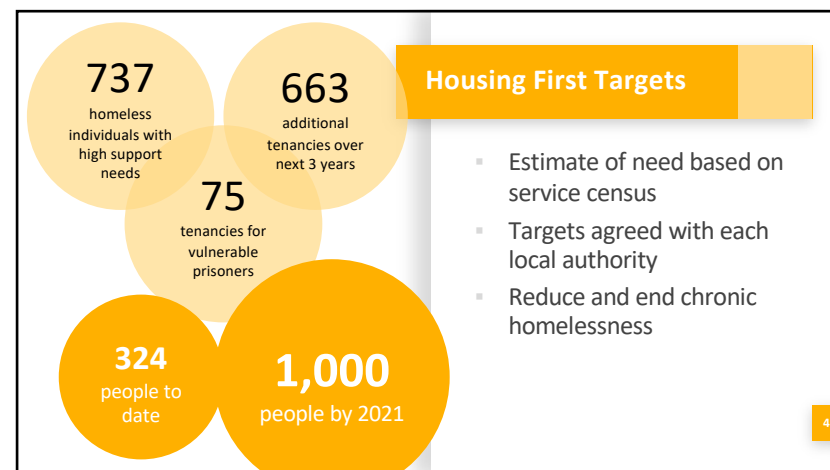
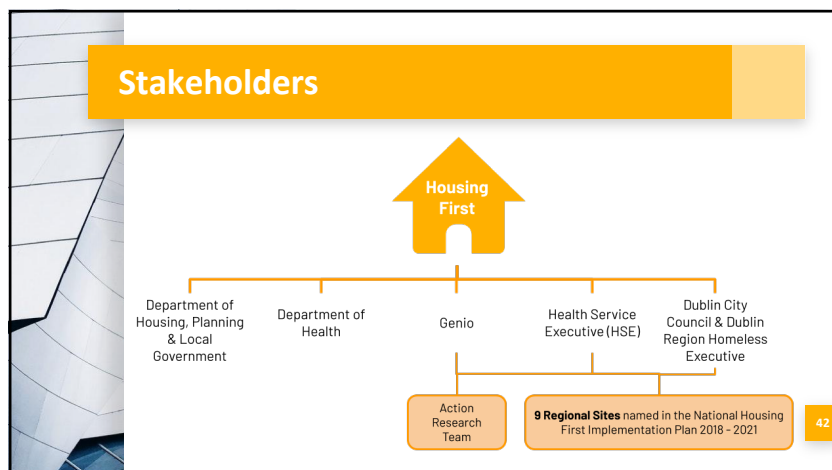
2011	Pilot project	30 tenancies
2014	Initial phase	100 tenancies
2016	Rebuilding Ireland	300 tenancies
2018	National HF Plan	600 tenancies









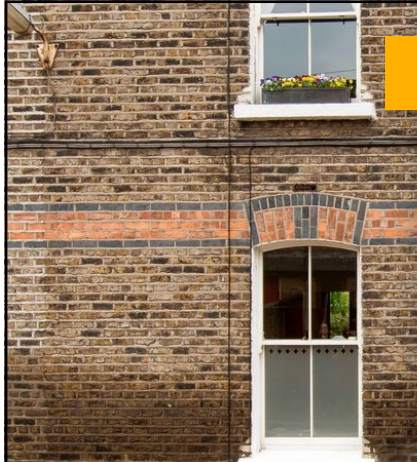




## Our Approach

Scaling Up	Training
Action Research	Evaluation

44



## Scaling Up

- Collaboration
- Consortia
- Competitive tendering
- Clinical Governance

45



## Training

- Awareness
- Delivering the model
- Fidelity
- Community of practice
- Training the trainers

46




## Action Research

- Interview practitioners
- Surface implementation issues
- Share learnings
- Identify workarounds

47






## Evaluation

- RCT
- Housing sustainment
- Health impacts
- Social integration
- Fidelity
- Cost benefit
- System change

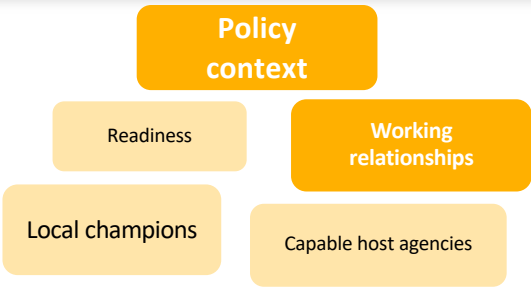
48



## 4. Co-production Opportunities and Challenges




## Systems Change Theory

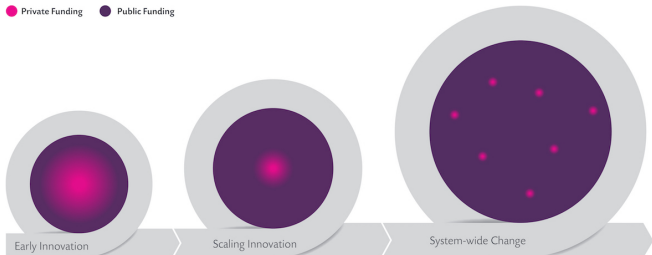


(Worton et al., 2017)

50



## Philanthropy Model



51

## Service User Involvement

### Opportunities

- Putting service user at heart of solution
- Learning from lived experience
- Integrity of approach
- Beneficiaries contribute to judging the outcome

### Challenges

- Recognising vulnerability
- Needs to be meaningful not tokenistic
- Listening to hard truths
- Must be in best interest of service user

52

## Working with State Agencies

### Opportunities

- Strategy-led
- Resource commitments
- Joined up delivery
- Means for expansion

### Challenges

- Buy-in & know-how
- Competing priorities
- Resistance to change
- Sustainable funding

53

## Working with NGOs

### Opportunities

- Leveraging broad expertise and resources
- Better delivery through co-operation
- Opportunity to deliver better outcomes
- Alignment of goals

### Challenges

- Traditional models
- 'Co-opetition'
- Diverse capacity, skillsets and geographical reach
- Challenging State vs working with State

54

## Working with Philanthropy


### Opportunities

- Emboldens policy makers
- Disruptive change
- Accelerated pace
- Knowledge resource
- Pulls agencies together
- Mutual accountability

### Challenges

- Broad versus narrow focus
- Mainstreaming funding
- Changing established practice
- Loss of policy /funding control

55



**Key Lessons**

- Demonstration
- Buy-in
- Collaboration
- Housing
- Resourcing teams
- Scaling up
- System changes

56